

433 MHz



To use the technical capability of MAGNETIC PRO YSH transmitters optimally, read the following instructions carefully. MAGNETIC PRO YSH transmitters are compatible with all devices of YOODA SMART HOME system.
www.sukcesgroup.pl



MAGNETIC PRO YSH transmitters is control dedicated to bidirectional communication.

1. Technical data



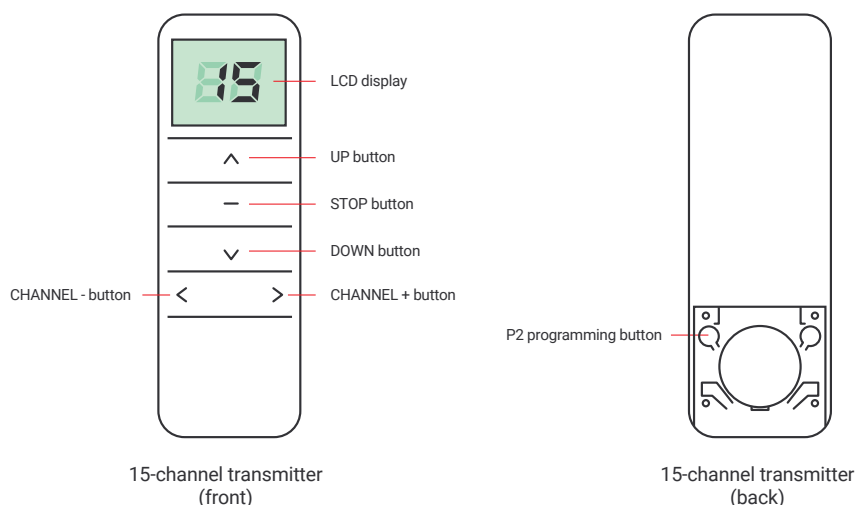
MAGNETIC PRO YSH 15-channel remote control with a display, white (MAGNETIC PRO_15R YSH)

1. Control:
possibility to control 1 motor or a group of up to 20 motors on each ch.
2. Range:
up to 200 meters in open area,
up to 35 meters indoors
3. Battery:
CR2450
4. Power supply:
3 V
5. Dimensions:
130 x 45 x 12 mm
6. Signal power:
10 mW
7. Operation temperature:
from 0°C to 50°C
8. Safety degree:
IP 30



The range given by the manufacturer is a variable value, depending on the conditions in the environment in which the device works. Factors such as building structure, signal interference from other devices, etc. affect range.

2. Description of the device



1. Move the back housing of the remote control down to access the battery and the programming button.
2. Battery life is ca. 1 year while executing approximately 4 commands per day.
3. The batteries need replacing when the receiver stops reacting while you press the buttons.
4. Pay attention to polarisation of the battery while replacing it.



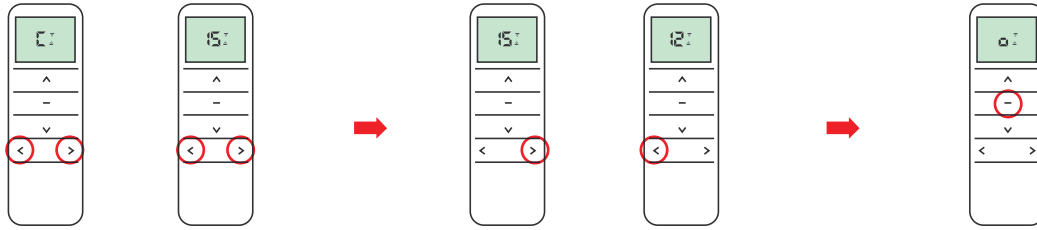
Batteries contain substances that may present risk to health or serious environment degradation. Used batteries must be disposed of in specially marked containers.

The product includes a battery. Swallowing a coin cell battery causes severe internal burns within 2 hours and can result in death. Store new and used batteries away from children. If the battery compartment does not close safely, stop using the product and keep it away from children. If you suspect that batteries might have been swallowed or placed in any body part, seek medical care immediately.

3. Selection of active channels



Pressing UP or DOWN button causes the exit from the selection of active channels mode. Perform the following procedure again to change the number of active channels.



Press and hold CHANNEL + and CHANNEL - buttons simultaneously. Symbol "C" will appear on the display and after 4 seconds - number 15, as well as up and down arrows.

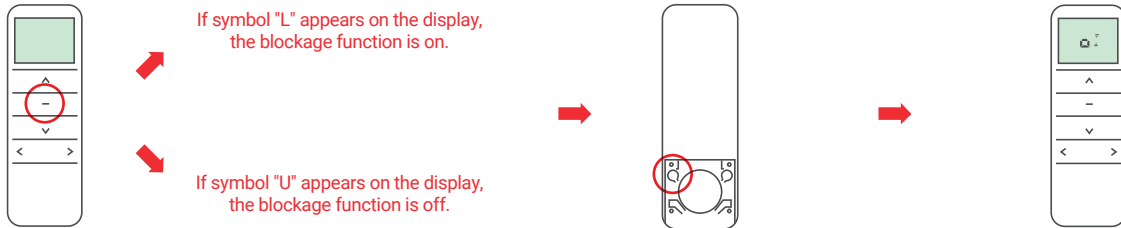
Set the number of displayed channels with CHANNEL + or CHANNEL - buttons.

Confirm the settings with STOP button. Symbol "o" appears on the display.

4. Blockage of function keys



1. Blockage of function keys prevents accidental pressing of two buttons used while programming motors or radio receivers.
2. This function is disabled due to factory settings. To turn it on/off you need to perform the following procedure.



Press and hold STOP button for 15 seconds.

If symbol "L" appears on the display, the blockage function is on.

If symbol "U" appears on the display, the blockage function is off.

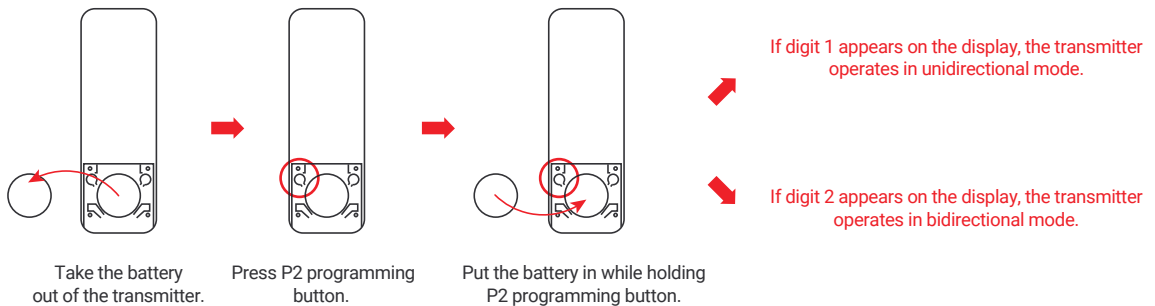
Press P2 programming button to confirm turning the blockage of function keys on/off.

Symbol "o" appears on the display.

5. Transmitter operation mode selection



1. Transmitter can operate in one of two modes:
a) bidirectional
b) unidirectional
2. The transmitter operates in bidirectional mode due to factory settings.



Take the battery out of the transmitter.

Press P2 programming button.

Put the battery in while holding P2 programming button.

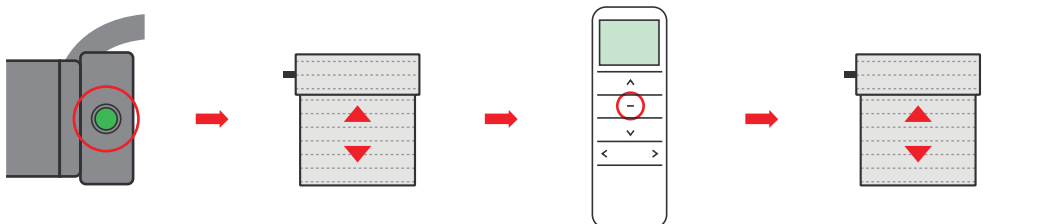
If digit 1 appears on the display, the transmitter operates in unidirectional mode.

If digit 2 appears on the display, the transmitter operates in bidirectional mode.

6. Programming the first transmitter for motors of EV/S type



1. Programming of a transmitter depends on the type of receiver. While programming you should abide by the manual of the device, that the transmitter is supposed to control.
2. A break between successive button presses longer than 6 seconds, will automatically cause the exit from programming mode without saving the changes.
3. If limit positions have not been set, programming of the first transmitter will delete transmitters that were programmed earlier.
4. If channel "0" is set on the display, the group channel is on. It allows to simultaneously control all blinds that are programmed on particular channels. Do not perform any programming procedures on this channel. The group channel is created automatically.



Turn on power supply or press the programming button on the cylinder head (for 2 sec.) if the power supply is on.

Motor will make a sound. Blind will make short up/down moves.

Press and hold STOP button on the remote control for 2 seconds.

Blind will make two short up/down moves. Motor will make a few short sound signals.

Transmitter has been programmed.