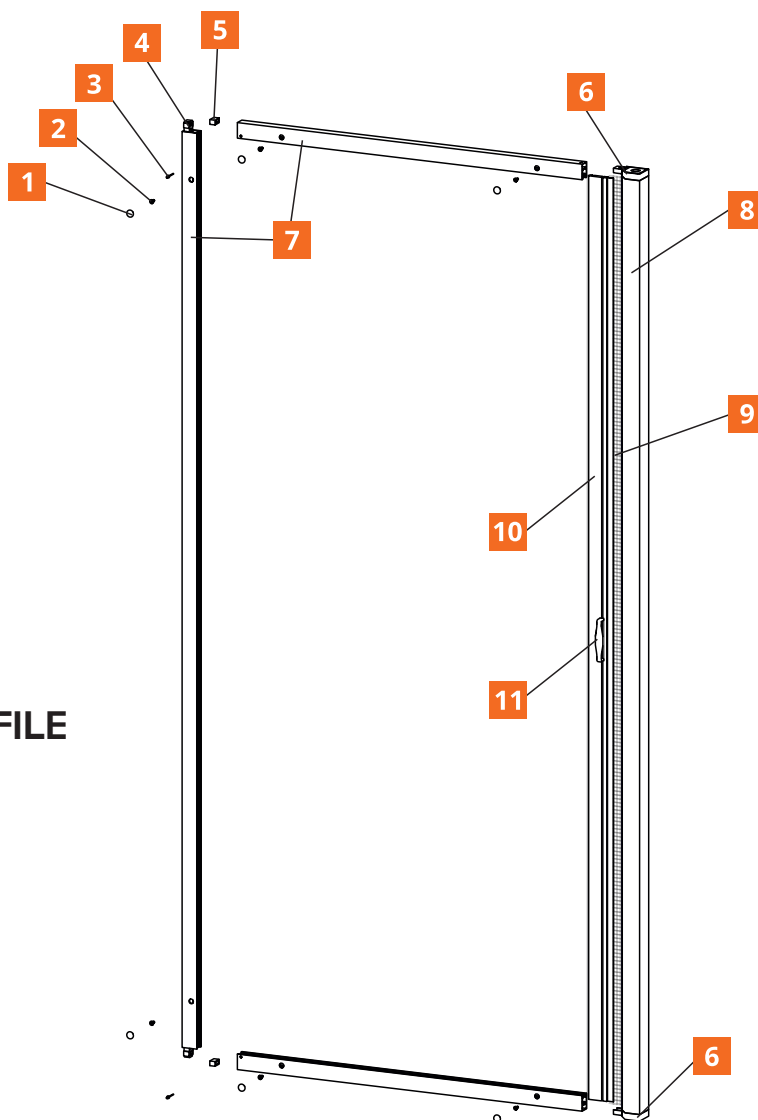


# SCREEN ROLLER BLINDS FOR DOOR

## MEASUREMENT & INSTALLATION INSTRUCTIONS

- 1 PLASTIC CAPS**
- 2 SCREWS**
- 3 CLINCH**
- 4 GUIDE CONNECTION**
- 5 GUIDE COVER**
- 6 CONTROL MECHANISM**
- 7 GUIDES**
- 8 SCREEN CASSETTE**
- 9 SCREEN**
- 10 SLIDING ALUMINUM PROFILE**
- 11 HANDLE**



### PRODUCT FEATURES:

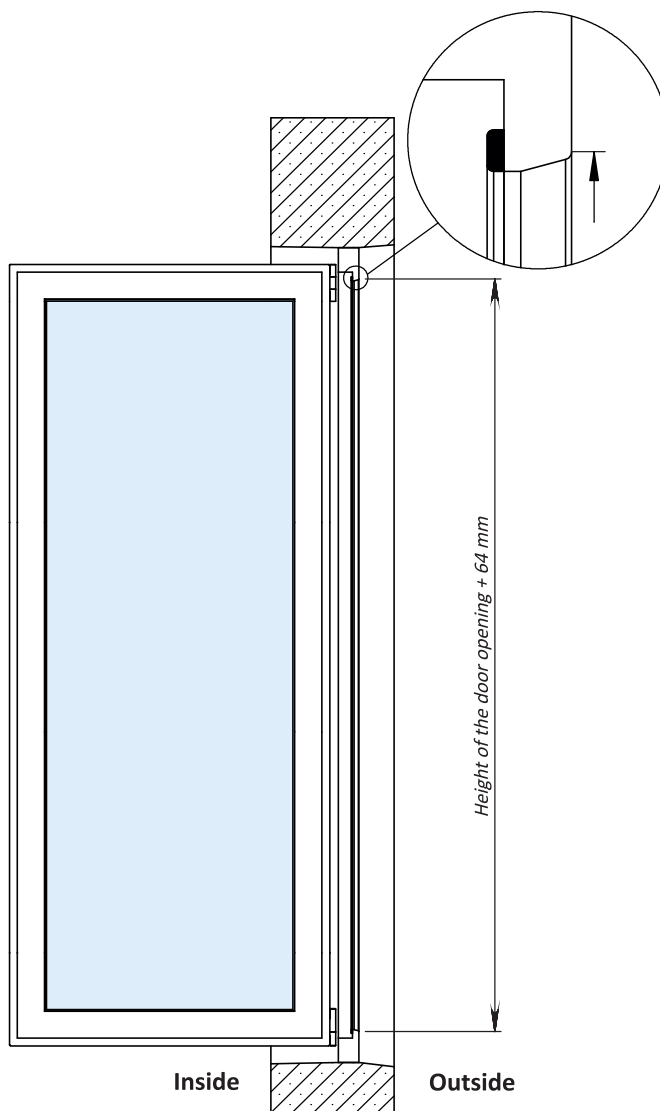
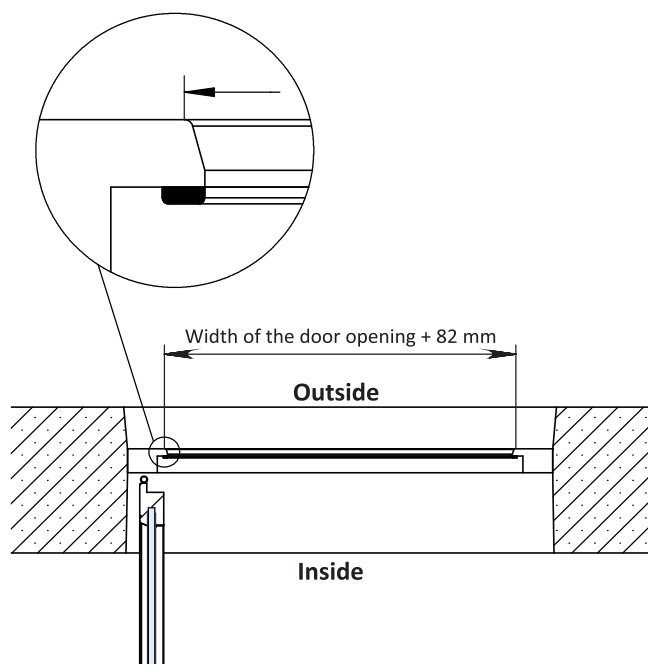
Minimum width of the screen-roller blind is 200 mm.  
Minimum height of the screen-roller blind is 400 mm.  
Maximum width of the screen-roller blind is 1400 mm.  
Maximum height of the screen-roller blind is 2600 mm.

## MEASUREMENT:

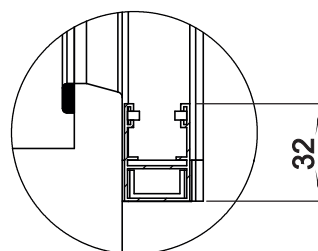
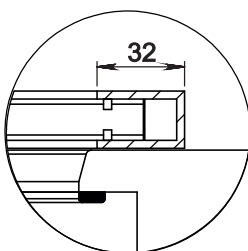
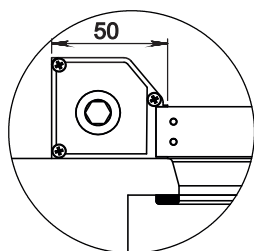
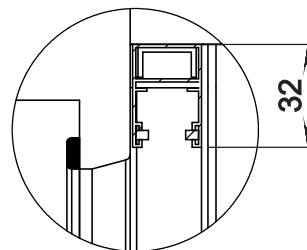
Two dimensions are necessary for measuring a screen-roller blind for the door:

**Height of the screen-roller blind** – height of the door opening from the lower edge of the opening to the upper edge of the opening is measured and indicated adding **64 mm**.

**Width of the screen-roller blind** – width of the door opening from one edge of the opening to another edge of the opening is measured and indicated adding **82 mm**.



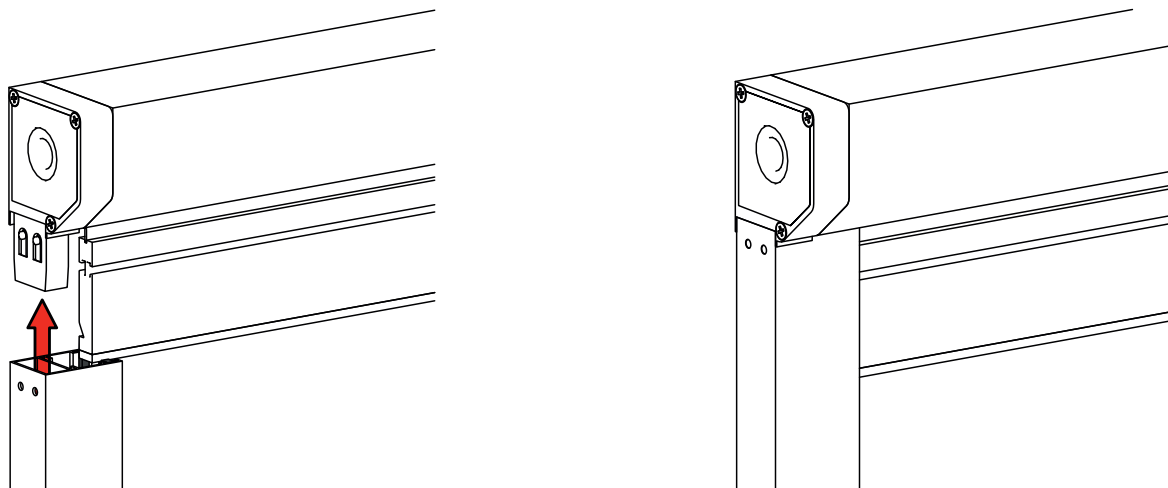
**!** During measurement, evaluate whether there is enough space for the cassette of the screen-roller blind and guides around the door opening.



## INSTALLATION:

### Step 1.

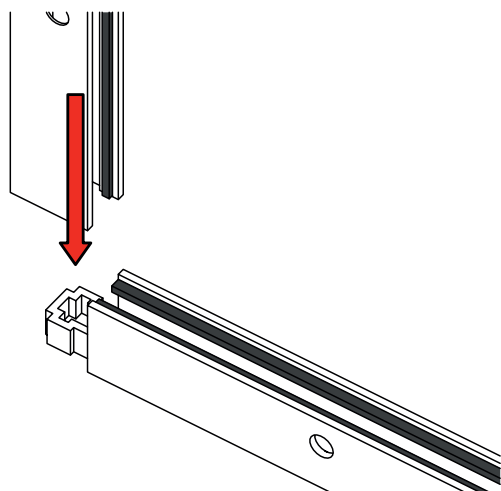
Connect side guides with the cassette of the screen-roller blind.



**!** In one of the ends of the side guide, two holes are screwed. That end of the guide is connected to the cassette and is locked.

### Step 2.

Insert the back guide into side guides.

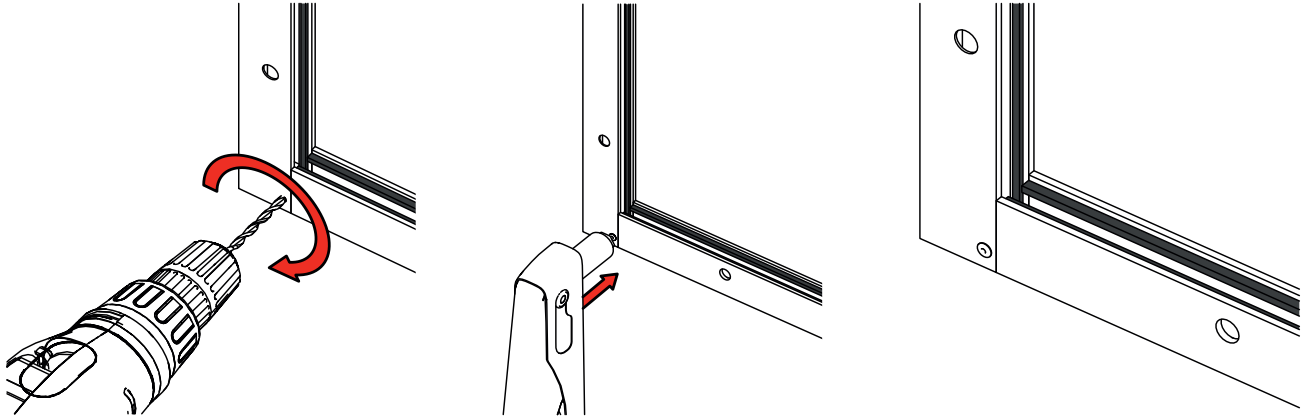


# SCREEN ROLLER BLIND FOR DOORS

## MEASUREMENT & INSTALLATION INSTRUCTIONS

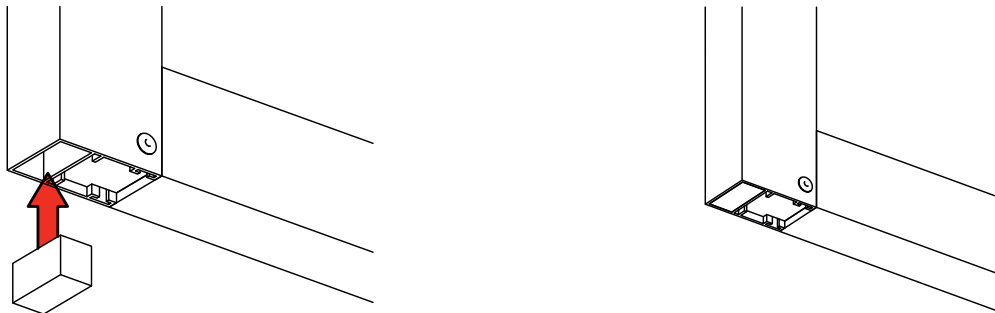
### Step 3.

Screw through the side guides by means of 4.1 mm drill (4 mm clinches are included in the package) and fasten with clinches.



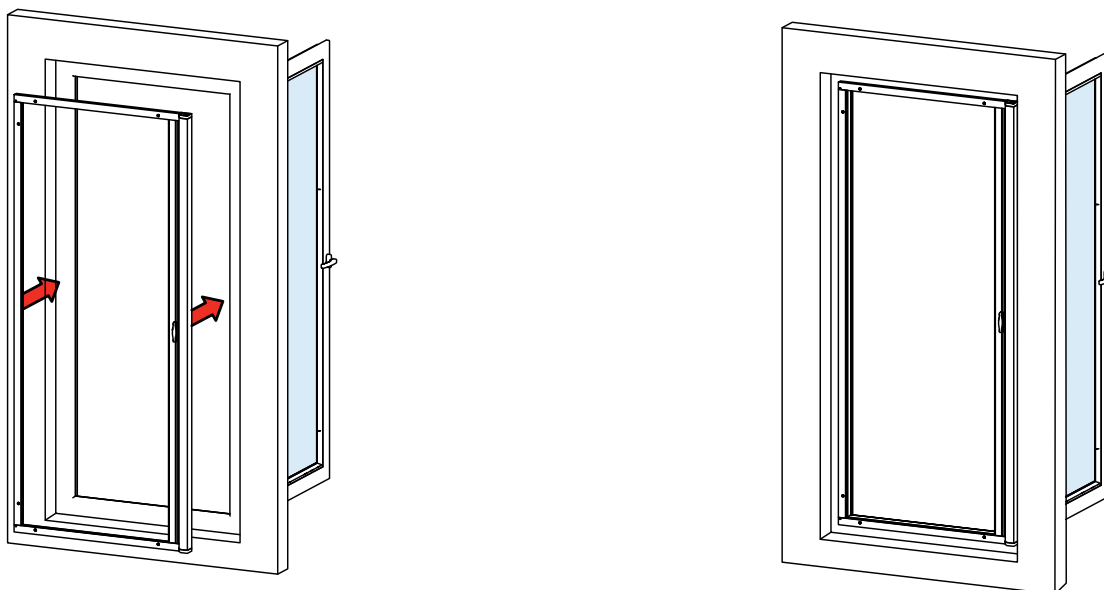
### Step 4.

Place the caps on the ends of the guides.



### Step 5.

Place the assembled frame of the screen to the door so that the guides would not cover the door opening.

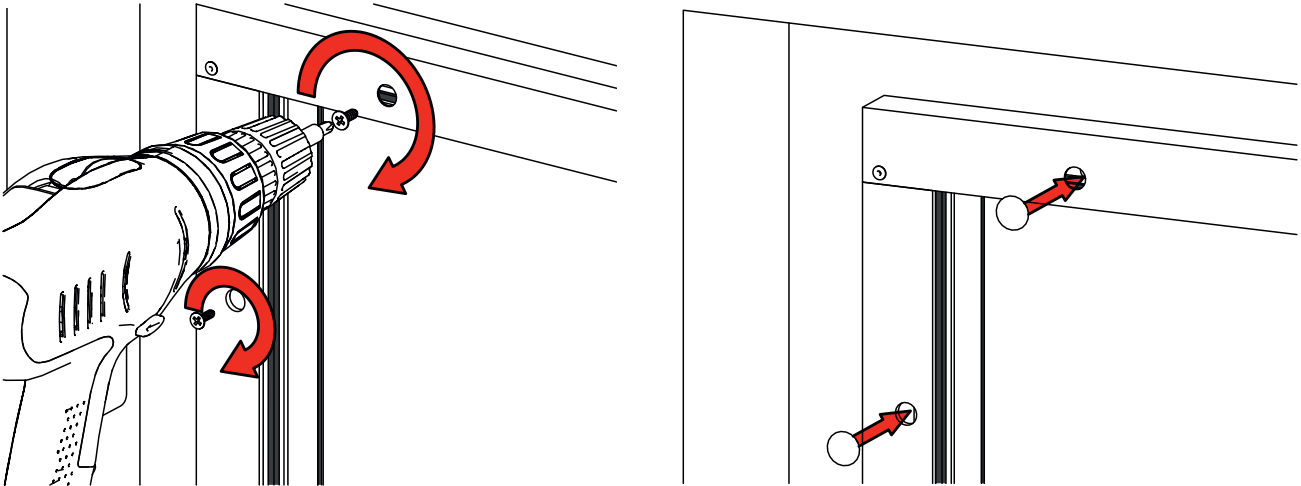


# SCREEN ROLLER BLIND FOR DOORS

## MEASUREMENT & INSTALLATION INSTRUCTIONS

### Step 6.

Screw the screen-roller blind onto the door frame. Place plastic caps into the holes.



### Step 7.

Test the mounted screen-roller blind for the door.

